



26 February 2012

To the School Sports Coordinator

2012 Hutt Water Polo Schools Leagues

You are cordially invited to enter your team/s into the 2012 Hutt Water Polo Schools Leagues to be held at the Naenae Swimming Pool, Everest Avenue, Naenae:

- **Primary** for Year 5 and 6
- **Intermediate Water Polo** for Year 7 and 8
- **Junior Secondary School** Water Polo – Year 9 and 10
- **Senior Secondary School** Water Polo - Open

The competition will run on Wednesday's starting on 16 May through to 27 June inclusive. Games will recommence in the third term on 18 July and continue through to finals night 29 August. The draw and results will be published on www.huttwaterpolo.org.nz

Game times will vary, but will be scheduled to start between 3.45 pm and 9.30 pm. Primary games will be played prior to 7.30 pm. All games will be ten minute halves with a two minute change of ends at half time.

Water Polo is played with a maximum number of 13 players per team. Seven players (*goalie & six field players*) can be in the water with up to six substitutes sitting poolside behind the 2 meter cone. For a game to commence, five players must be in the water with hats on lined up on the goal line ready to play at the scheduled time.

All players are required to pay a weekly admission fee of \$2 cash at reception before entering the Pool Complex

Team Entry:

- Your Entry Form is to be emailed to naenaecomp@huttwaterpolo.org.nz (*one completed entry per team*). Entries sent to any other email address will not be accepted.
- To enter a team, a minimum number of seven players per team are required.
- Entries close 23 March or earlier when maximum number of entries received per grade.
- Late entries will not be accepted after 13 April, or once the draw has been published.
- Entries will be confirmed when entry fees have been paid.
- We reserve the right to limit the number of school entries per grade to a maximum of two teams per grade in order to accommodate entries from all schools.

Player Eligibility:

- Entry into this competition is open to any individual primary, intermediate or secondary school comprising players who are full time students at the same school.
- An individual player can only be registered to play for one team.
- Players registered in a higher grade team cannot play down in a lower graded team.
- Players from a lower graded team can play up in a higher graded team to fill in if the Hutt Water Polo Club is advised prior to the game. Once a player has played up 3 times, they stay up.
- A default will automatically be recorded against any team if a player plays for two teams, or a player plays up without us being advised before the game commences, or a player plays for a lower graded team.
- A Junior Secondary School player can also be registered to play for a Senior Secondary School team.

Player Registration:

- All players must be registered on the **Player Registration form** (*to be submitted by email in the attached format*) on or before 22 May to naenaecomp@huttwaterpolo.org.nz
- Defaults will automatically be recorded against any team that has not filed the official Player Registration list in the attached format after 22 May.
- An individual player team list is required per team with a minimum of 7 players per team.

Payment of Entry Fees:

Entry fees are to be paid direct to Hutt Water Polo Club Account No. 03-0531-0622204-00

Late entries/Late Payment of Fees:

A late payment fee of \$75 per team will apply for all late entries or late payments received on or after 24 March. All entries fees are payable before any team can compete in the competition.

Exclusion Dates:

Please check your school calendar carefully and let us know any dates that your team is unable to play in pool games on your Entry Form. We try to accommodate all requests, but it is not always possible. We are unable to accommodate any requests for exclusions for semi finals and finals nights or changes to the draw once it has been published.

Adult Scorer

All teams are required to provide one adult scorer seated at the scoring table at the commencement of every game.

ArtSplash / DanceSplash:

If your school is intending to be involved with either Artsplash or DanceSplash, please request, in advance, your performance date to be another evening other than Wednesday.

Defaults:

Early notification of defaults is appreciated, but we must receive an email no later than 11 am on the preceding Tuesday **direct to** naenaecomp@huttwaterpolo.org.nz *This enables us to inform the other team so pupils can be told before leaving school on Tuesday and reschedule the referee roster.*

Any default not officially advised to naenaecomp@huttwaterpolo.org.nz or a default advised after 11 am on the preceding Tuesday, will incur a default charge of \$50 per game payable by the School to the Hutt Water Polo Club before competing in any further competitions games. A deduction of **two competition points** will also occur.

Rules:

New Zealand Water Polo Rules apply including disciplinary procedures www.waterpolo.org.nz

Lodging a Protest: The designated team manager or sports coordinator as named on entry form must verbally inform the pool controller within ten (10) minutes after the completion of the game, of their intention to lodge a protest. The team manager or sports coordinator shall make a written protest to the pool controller within thirty (30) minutes after the completion of the game. A deposit of \$100 cash must accompany any written protest, to be refunded if the protest is upheld.

Communications with us:

All communications for this competition must be sent to naenaecomp@huttwaterpolo.org.nz from the one authorised person nominated by the school principal named on the Entry Form. Emails sent to any other email address will not be accepted as valid communication.



TEAM ENTRY FORM

2012 Hutt Water Polo School Leagues

School:	
Coordinator:	Cell Phone No:
Coordinator's email <i>checked)</i>	<i>(regularly</i>
<i>NB: all communication will only go to and be accepted from the named coordinators email address, who is responsible for passing the information on to coaches, managers, parents and students.</i>	

Our Exclusion Dates are:

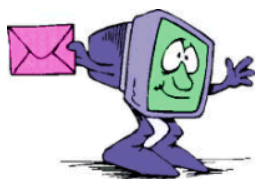
Please check your school calendar carefully and let us know before 23 March, any dates your team is unable to participate during pool play games e.g. production; concert; etc. We are unable to accommodate any requests for semi or finals nights or changes to the draw once it has been published.

Grade	No. of Teams	Contact Name & Cell phone No.	Team Entry Fee (if received and paid by 23 March)	Late Entry Fee <i>Apply if team entry form/payment received on or after 24 March</i>
Primary Yr 5/6 <i>Introductory grade for learners only</i>			\$160 per team	\$235 per team
Primary Yr 5/6 <i>- Medium/Strong</i>			\$160 per team	\$235 per team
Intermediate Water Polo Yr 7/8 <i>Novice only</i>			\$185 per team	\$260 per team
Intermediate Water Polo Yr 7/8			\$185 per team	\$260 per team
Junior Secondary School - Yr 9/10			\$210 per team	\$285 per team
Senior Secondary School - Open			\$210 per team	\$285 per team

The Hutt Water Polo Club reserves the right to place teams in appropriate grades.

Principal's Name:

I verify that all students entered into this competition are enrolled at our school and that a Teacher or Team Manager will be responsible for the supervision of the students at all times



All Entry Forms to naenaecomp@huttwaterpolo.org.nz by 23 March
Entries close 23 March or earlier when maximum number of entries received per grade